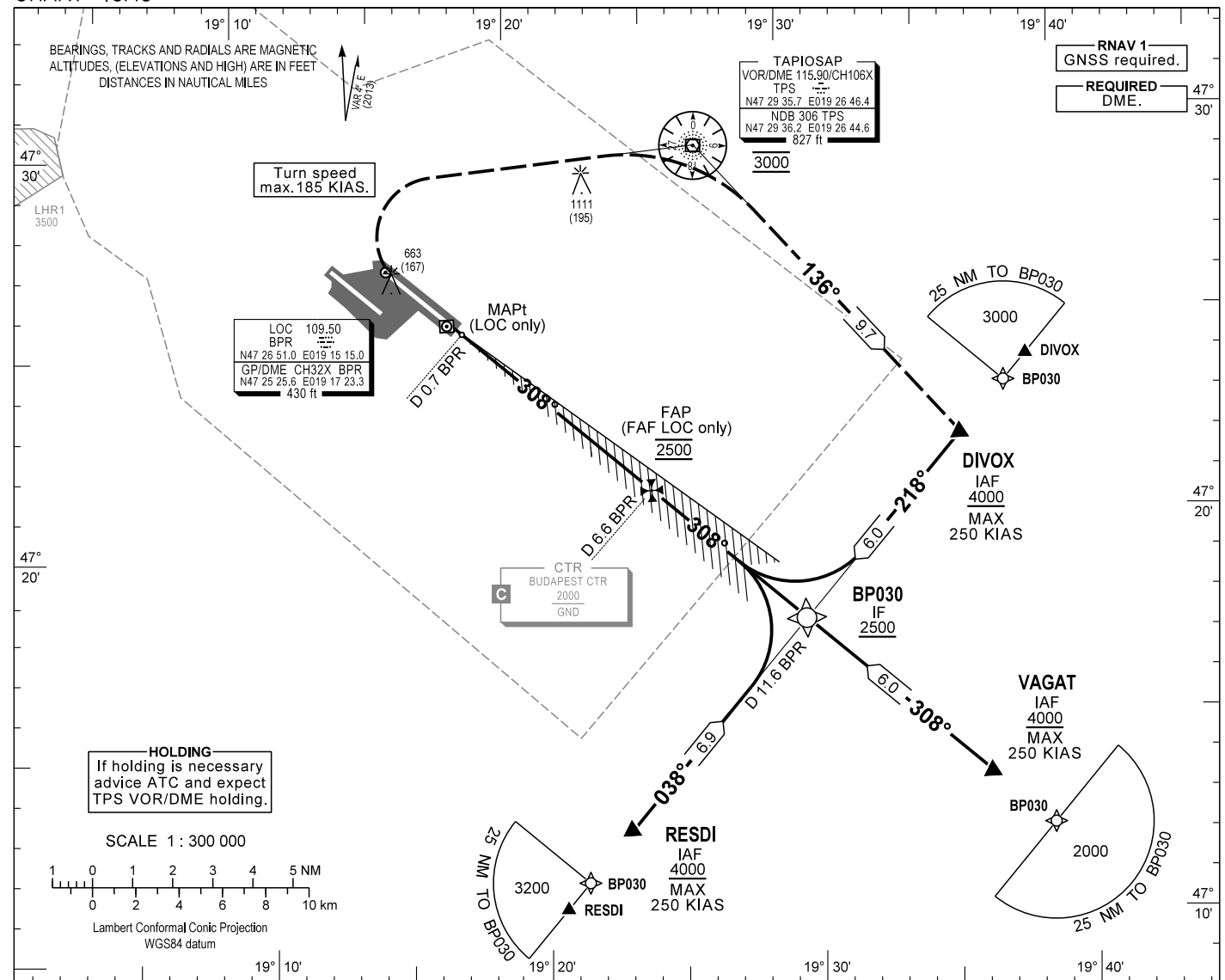
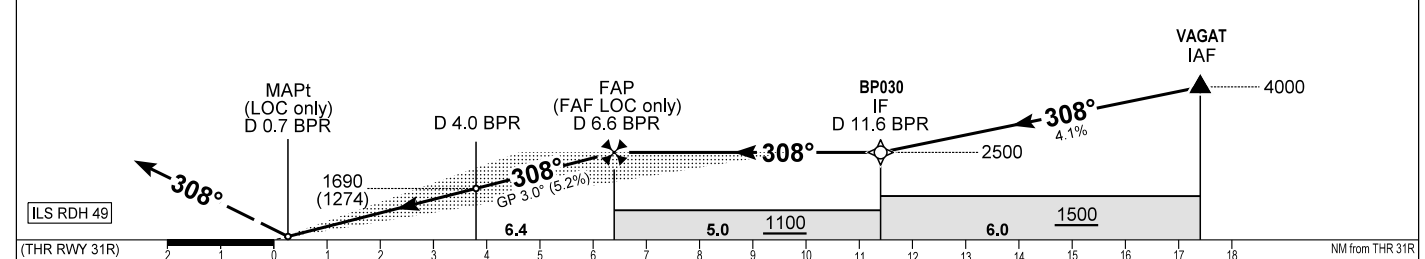


INSTRUMENT APPROACH CHART - ICAO
AERODROME ELEV 496
HEIGHTS RELATED TO THR RWY 31R - ELEV 416
BUDAPEST APPROACH 129.700 ATIS 132.375 (117.300)
122.975 BUDAPEST TOWER 118.100
119.500 BUDAPEST GROUND 121.900
BUDAPEST/LISZT FERENC ILS OR LOC RWY 31R
(ACFT CAT A, B, C, D)



MISSED APPROACH
Climb to 3000 on RWY track 308°.
When passing 900 turn right to TPS.
Maximum turning speed 185 KIAS.
At TPS (fly-by) turn right to track 136° inbound DIVOX.



CAT OF ACFT		A	B	C	D	DME BPR	NM	6.0	5.0	4.0	3.0	2.0	
OCA (H) STRAIGHT-IN	CAT I	2.5% macg	1169 (753)	1179 (763)	1189 (773)	1199 (783)	DIST THR / RWY 31R	NM	5.8	4.8	3.8	2.8	1.8
		3.6% macg	596 (180)	609 (193)	617 (201)	627 (211)	ALTITUDE	ft	2330	2010	1690	1380	1060
	CAT II	2.5% macg	1080 (664)	1097 (681)	1110 (694)	1123 (707)	Timing not authorised for defining the MAPt.						
		3.6% macg	514 (98)	532 (116)	544 (128)	558 (142)	GS	kt	80	100	120	140	160
LOC	2.5% macg	1430 (1014)	1450 (1034)	1480 (1064)	1490 (1074)	FAP/FAF - THR 31R (6.4 NM)	min:sec	4:48	3:51	3:12	2:45	2:24	2:08
	3.6% macg	770 (354)				Rate of descent (326.1 ft/NM)	ft/min	430	540	650	760	860	970
CIRCLING		980	1190	1310	1510								

NOTE: CAT IIIA APPROVED

AD 2 LHBP INSTRUMENT APPROACH CHART ILS OR LOC RWY 31R

SEQ	P&T	Name	Latitude	Longitude	FlyOver	Bearing/ (Len/Dur)	Turn Direction	Altitude (FT)	IAS (KT)	VP/ARDH (FT)	RNP (NM)
010	IF	DIVOX(IAF)	N47 22 06.5	E019 35 57.5	N	+4000	-250
020	TF	BP030(IF)	N47 17 41.5	E019 29 59.5	N	222 T/6.00 NM	...	+2500	...	-2.4°	...
010	IF	RESDI(IAF)	N47 12 38.0	E019 23 11.1	N	+4000	-250
020	TF	BP030(IF)	N47 17 41.5	E019 29 59.5	N	042 T/6.86 NM	...	+2500	...	-2.1°	...
010	IF	DIVOX(IAF)	N47 22 06.5	E019 35 57.5	N	+4000	-250
020	TF	BP030(IF)	N47 17 41.5	E019 29 59.5	N	312 T/6.00 NM	...	+2500	...	-2.4°	...
010	IF	BP030(IF)	N47 17 41.5	E019 29 59.5	N	+2500
020	CF	BP029(FAP)	N47 21 04.1	E019 24 34.4	Y	312 T/5.00 NM	...	@2500	...	-0.0°	...
030	CF	BP028(LTP/FTP)	N47 25 22.6	E019 17 37.9	Y	312 T/3.39 NM	...	+465	...	-3.0°/15	...
010	IF	MAPt (LOC only)	N47 25 00.8	E019 18 13.1	N	+770
020	CA	N	312 T/1.76 NM	...	+900	...	2.1°	...
030	DF	TPS	N47 29 35.7	E019 26 46.4	N	...	R	@3000	-185	2.0°	...
040	TF	DIVOX	N47 22 06.5	E019 35 57.5	N	140 T/9.75 NM	R	@3000	...	0.0°	...

Final approach descent: 3.0°
LOC only descent: 2.97°