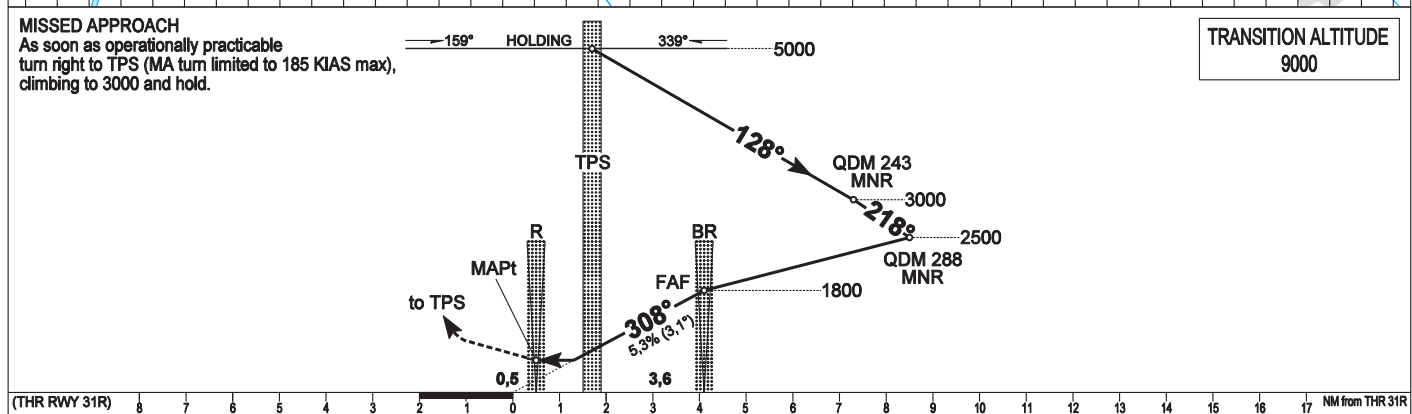
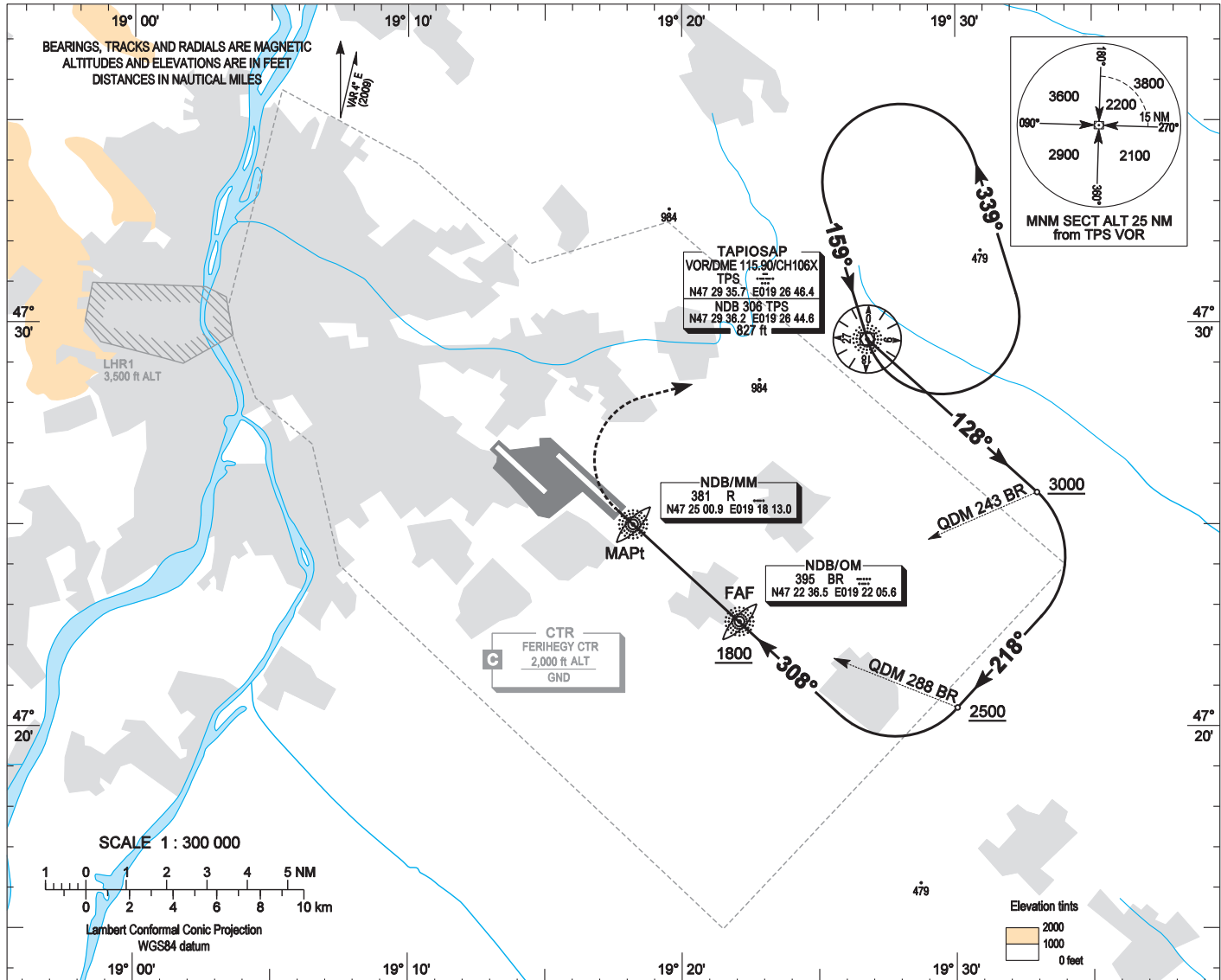


AIP HUNGARY

INSTRUMENT APPROACH CHART - ICAO
AERODROME ELEV 496
HEIGHTS RELATED TO THR RWY 31R - ELEV 416

BUDAPEST APPROACH	129,700	ATIS	132,375
	122,975	FERIHEGY TOWER	118,100
	119,500	FERIHEGY GROUND	121,900

BUDAPEST/FERIHEGY
NDB RWY 31R
(ACFT CAT A, B, C, D)



		NM from THR 31R										
		A	B	C	D	kt	60	90	120	150	180	
OCA (OCH)												
STRAIGHT-IN APPROACH	ft	880 (464)				FAF (BR) - MAPt 3,60 NM	MIN:sec	3:36	2:24	1:48	1:26	1:12
CIRCLING APPROACH	ft AMSL	950	1100	1280	1460							
	VIS. m	1900	2800	3700	4600							

AD 2-LHBP-NDB 31R

NDB approach procedure:

Initial level: 5000.

Depart TPS VOR on heading 128° and descend to 3000.

At BR NDB QDM 243° turn right on heading 218° and descend to 2500.

At BR NDB QDM 288° turn right on heading 308° (inbound to BR NDB) and descend to 1800.

After crossing BR NDB follow R NDB and descend to 880.

Holding procedure:

Holding fix: TPS VOR.

Left hand holding pattern.

Maximum speed: 230 KIAS

Inbound track: 159°

Outbound track: 339°

Rate of turn: 3°/sec. or 25° bank angle

(whichever requires lesser bank)

Outbound timing: 1 min.

Minimum holding altitude: 5000 (ATC)

3000 for Missed approach (ATC)

Final approach descent: 3,07°