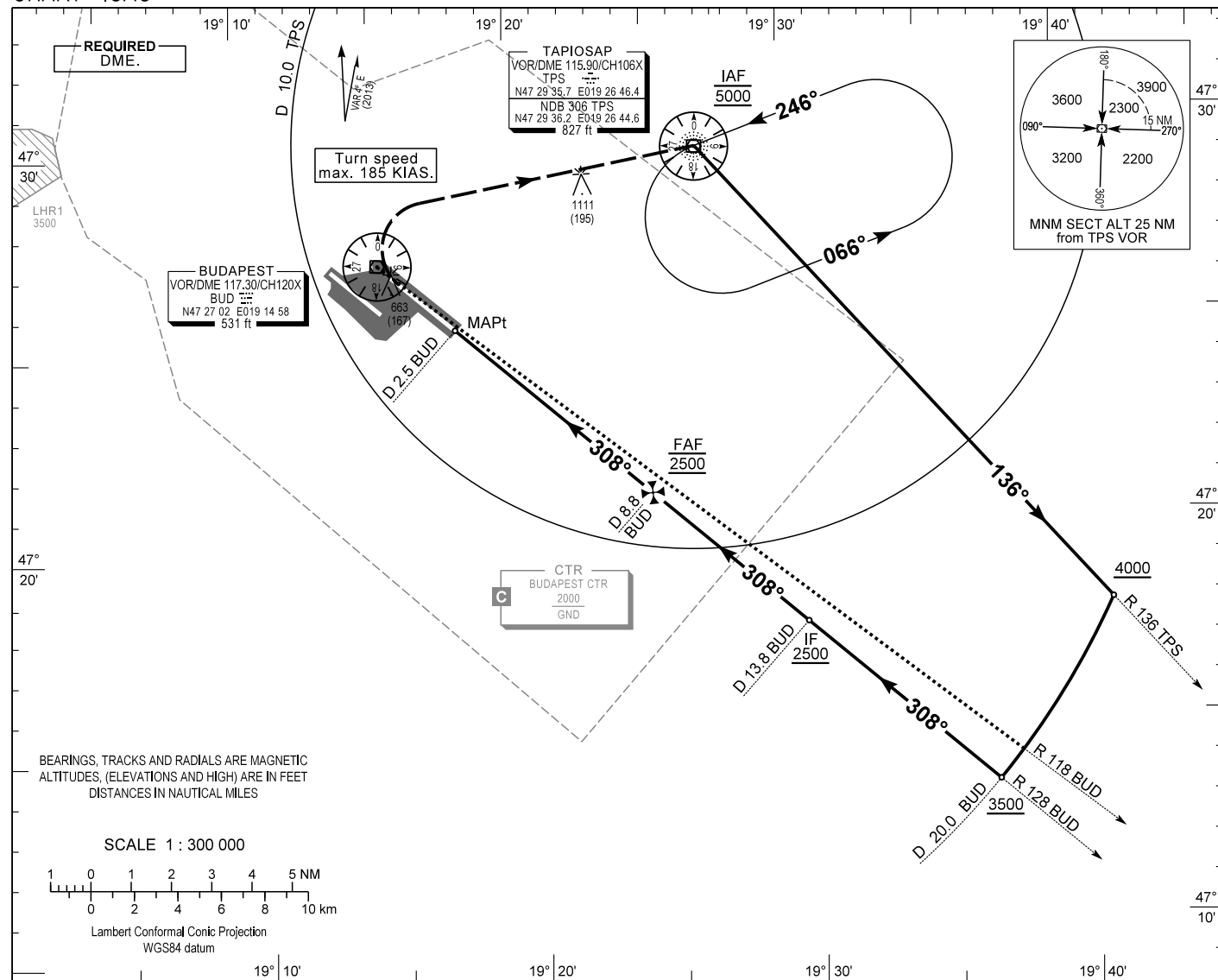


INSTRUMENT APPROACH CHART - ICAO
AERODROME ELEV 496
HEIGHTS RELATED TO THR RWY 31R - ELEV 416

BUDAPEST APPROACH 129.700
122.975
119.500
ATIS 132.375 (117.300)
BUDAPEST TOWER 118.100
BUDAPEST GROUND 121.900

BUDAPEST/LISZT FERENC VOR RWY 31R
(ACFT CAT A, B, C, D)



BEARINGS, TRACKS AND RADIALS ARE MAGNETIC
ALTITUDES, (ELEVATIONS AND HIGH) ARE IN FEET
DISTANCES IN NAUTICAL MILES

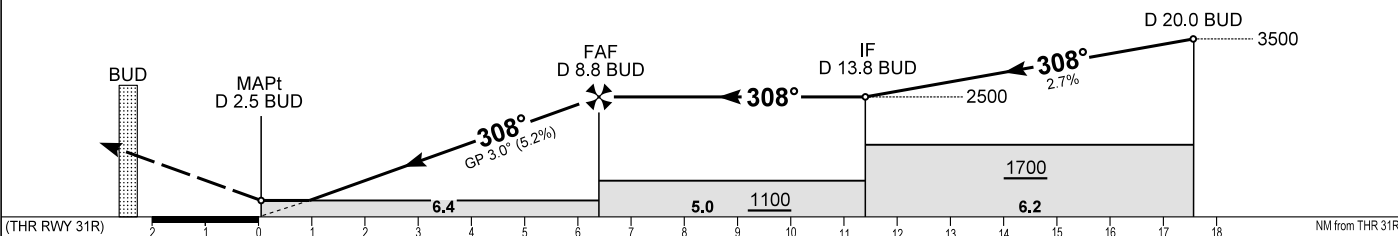
SCALE 1 : 300 000



Lambert Conformal Conic Projection
WGS84 datum

MISSED APPROACH
Climb to 3000 on R 128 BUD inbound BUD VOR.
When passing 900 turn right to TPS VOR.
Maximum turning speed 185 KIAS.
At 3000 enter published holding pattern at TPS VOR/DME.

TRANSITION ALTITUDE
10000



CAT OF ACFT	A				B				C				D			
	2.5% macg				3.7% macg											
OCA (H) STRAIGHT-IN	1240 (824)				1260 (844)											
	770 (354)				790 (374)											
CIRCLING	980				1190				1310				1510			

GS	kt	80	100	120	140	160	180
FAF - RWY 31R (6.4 NM)	min:sec	4:48	3:51	3:12	2:45	2:24	2:08
Rate of descent (326.1 ft/NM)	ft/min	430	540	650	760	860	970

AD 2 LHBP INSTRUMENT APPROACH CHART VOR RWY 31R

VOR approach procedure:
Initial altitude 5000.
Leave TPS VOR on R 136 TPS outbound and descend 4000.
At D 20.0 BUD turn right and join CW D 20.0 BUD DME arc, descend 3500.
After crossing R 118 BUD leading radial turn right and intercept R 128 BUD inbound (final track), descend 2500.
When crossing D 8.8 BUD (FAF) descend to published minimum altitude.

Holding procedure:
Holding fix: TPS VOR.
Left hand holding pattern.
Maximum speed: 230 KIAS
Inbound track: 246°
Outbound track: 066°
Rate of turn: 3°/sec. or 25° bank angle (whichever requires lesser bank)
Outbound timing: 1 min.
Minimum holding altitude: 5000
3000 for Missed approach
Maximum holding altitude: 10000

Final approach descent: 3.0°