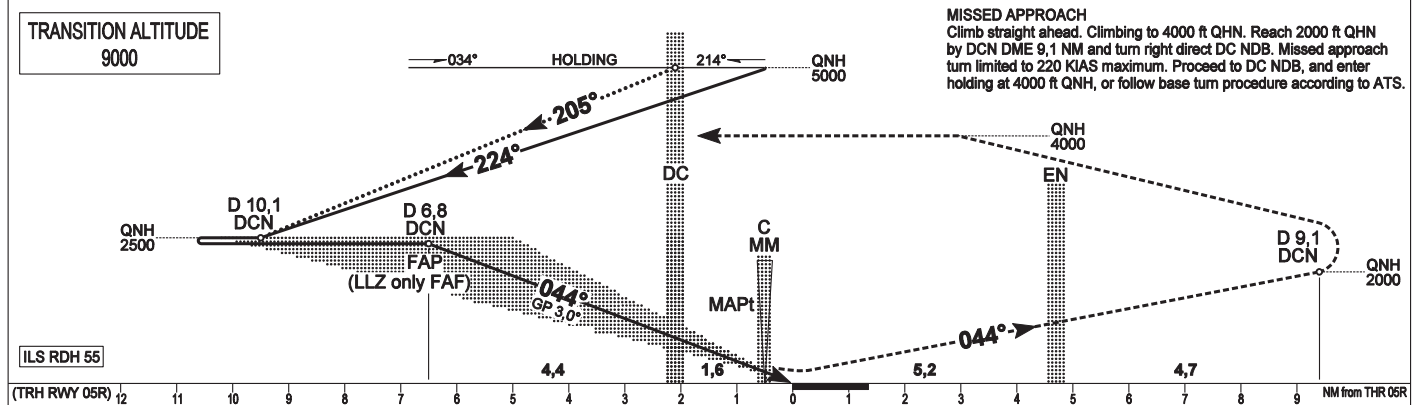
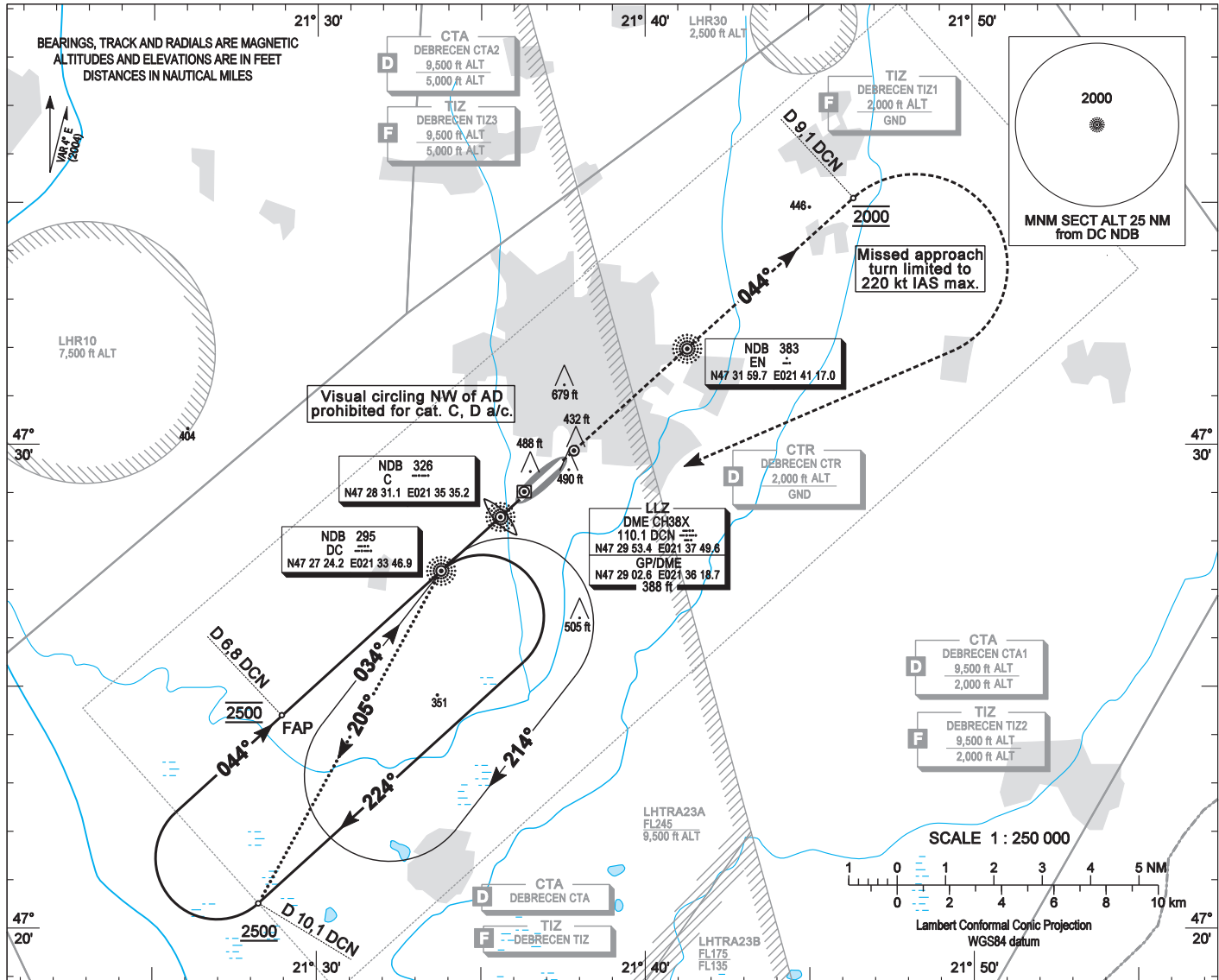


INSTRUMENT APPROACH CHART - ICAO

AERODROME ELEV 359
HEIGHTS RELATED TO THR RWY 05R - ELEV 355

DEBRECEN TOWER 125,900
DEBRECEN INFO 125,900
BUDAPEST INFO (EAST) 133,000

DEBRECEN
ILS and LLZ only, RWY 05R
(ACFT CAT A, B, C, D)



OCA (OCH)		A	B	C	D	GROUND SPEED							
STRAIGHT-IN APPROACH	Cat. I	Press. ALT	508 (153)	520 (165)	528 (173)	539 (184)	kt	60	90	120	150	180	
	LLZ only		660 (306)				MIN:sec	6:03	4:01	3:01	2:25	2:01	
CIRCLING APPROACH		ft AMSL	1060/330	1060/330	1060/330 SE of AD only	1060/330 SE of AD only	Rate of descent (5,2%)	m/s	1,6	2,4	3,2	4,0	4,8
		VIS. m	1900	2800	3700	4600							

AD 2-LHDC-ILS 05R

ILS approach from DC NDB (Holding):

Initial altitude: 5000 ft QNH.

When crossing DC NDB holding fix turn right to heading 224° (185 KIAS max.) and descend to 2500 ft QNH.

Fly outbound and at DCN DME 10,1 NM turn right (185 KIAS max.) to intercept DCN LLZ 044°.

Glide path interception at DCN DME 6,8 NM (descent fix), then follow ILS.

Base turn ILS approach from DC NDB:

Available at ATC discretion only.

When crossing DC NDB fly outbound on track 205 (QDM 025°) and descend to 2500 QNH.

At DCN DME 10,1 NM turn right (185 KIAS max.) to intercept DCN LLZ 044°, then follow basic procedure.

Holding procedure:

Holding fix: DC NDB.

Right hand holding pattern.

Sector 1 (parallel) entry prohibited (except Missed Approach returning direct to DC NDB).

Maximum speed:	220 KIAS
Inbound track:	034° MAG
Outbound track:	214° MAG
Rate of turn:	3°/sec. or 25° bank angle (whichever requires lesser bank)
Outbound timing:	1 min.
Minimum holding altitude:	5000 ft QNH 4000 ft QNH for Missed Approach