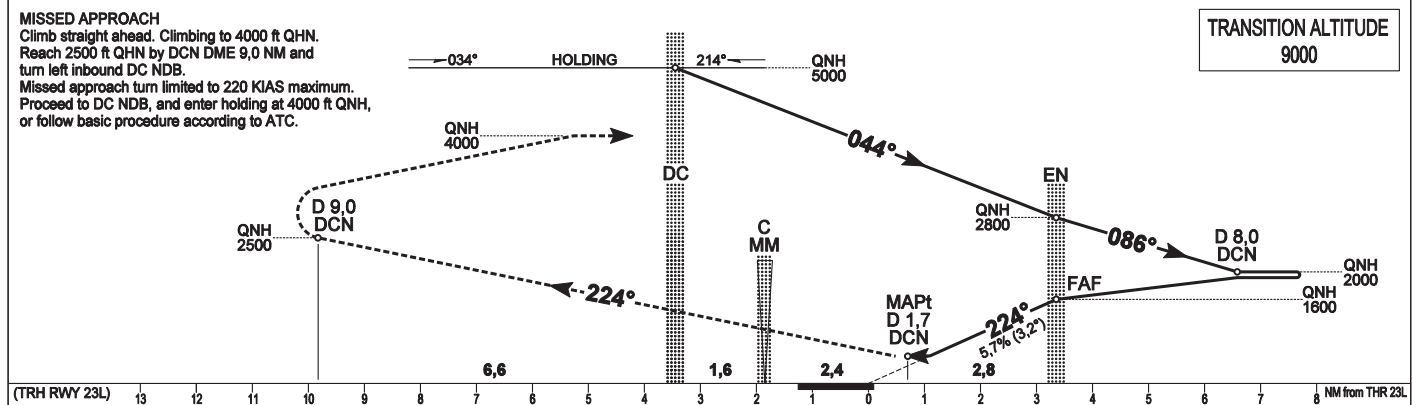
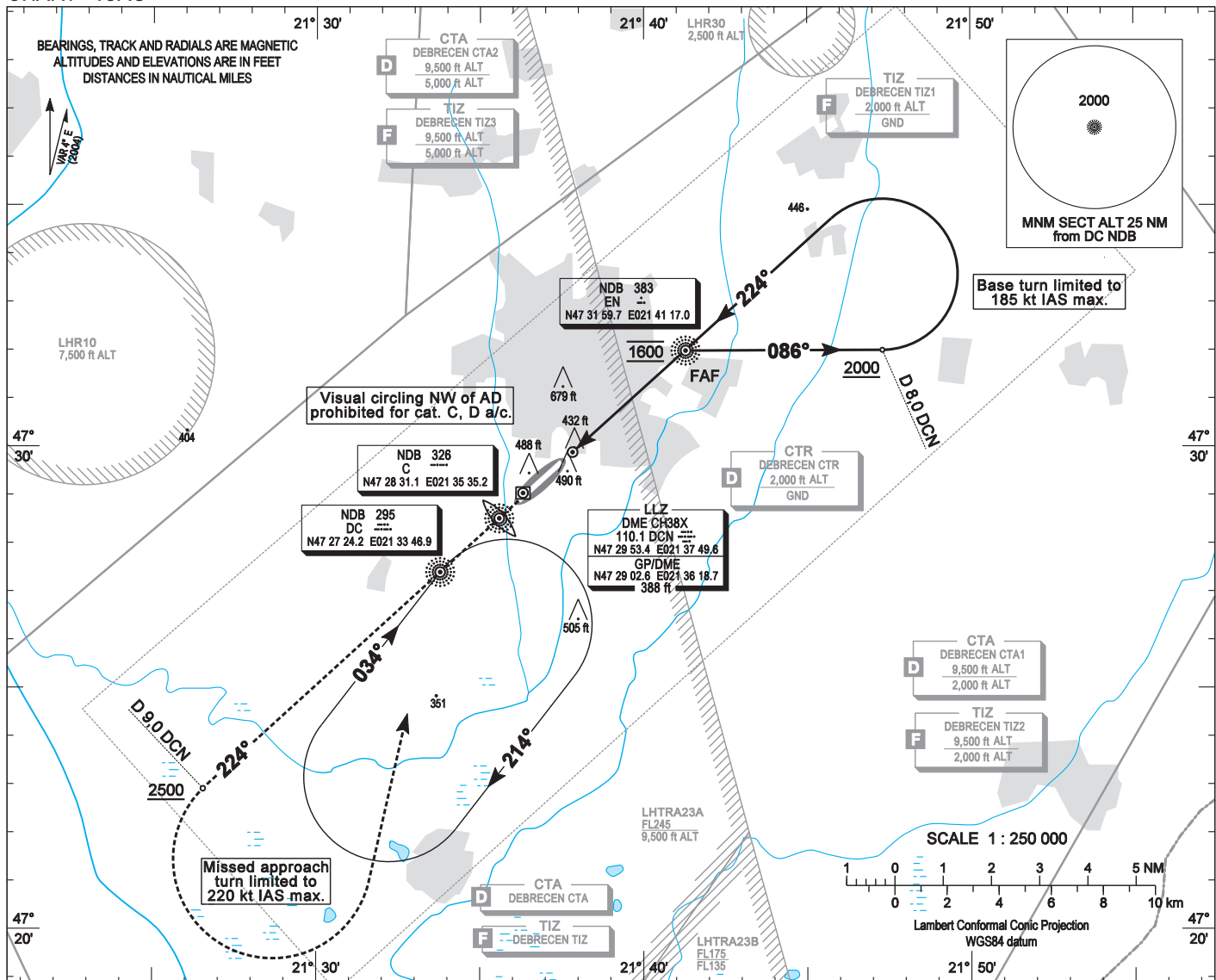


**INSTRUMENT  
APPROACH  
CHART - ICAO**

**AERODROME ELEV 359**  
HEIGHTS RELATED TO  
THR RWY 23L - ELEV 359

DEBRECEN TOWER 125,900  
DEBRECEN INFO 125,900  
BUDAPEST INFO (EAST) 133,000

**DEBRECEN  
NDB, RWY 23L**  
(ACFT CAT A, B, C, D)



(THR RWY 23L)	13	12	11	10	9	8	7	6	5	4	3	2	1	0	1	2	3	4	5	6	7	8	NM from THR 23L
OCA (OCH)					A	B	C	D	GROUND SPEED					kt	60	90	120	150	180				
STRAIGHT-IN APPROACH					920 (560)				FAF - MAPt 2,78 NM					MIN:sec	2:47	1:51	1:24	1:07	0:56				
CIRCLING APPROACH	ft AMSL	1060/330	1060/330	1160/360	1160/360																		
	VIS. m	1900	2800	3700	4600																		

## AD 2-LHDC-NDB 23L

### NDB approach from DC NDB:

Initial altitude: 5000 ft QNH.

Proceed to EN NDB and descend to 2800 ft QNH.

At EN NDB turn right to 086° and descend to 2000 ft QNH.

Fly outbound to DCN DME 8,0 NM and turn left to track 224 inbound EN NDB (185 KIAS max.).

Proceed to EN NDB and descend to 1600 ft.

At EN NDB descend to 920 ft QNH on track 224.

### Holding procedure:

Holding fix: DC NDB.

Right hand holding pattern.

### Sector 1 (parallel) entry prohibited.

Maximum speed: 220 KIAS  
Inbound track: 034° MAG  
Outbound track: 214° MAG  
Rate of turn: 3°/sec. or 25° bank angle  
(whichever requires lesser bank)  
Outbound timing: 1 min.  
Minimum holding altitude: 5000 ft QNH  
4000 ft QNH for Missed Approach

Final approach descent: 3,23°