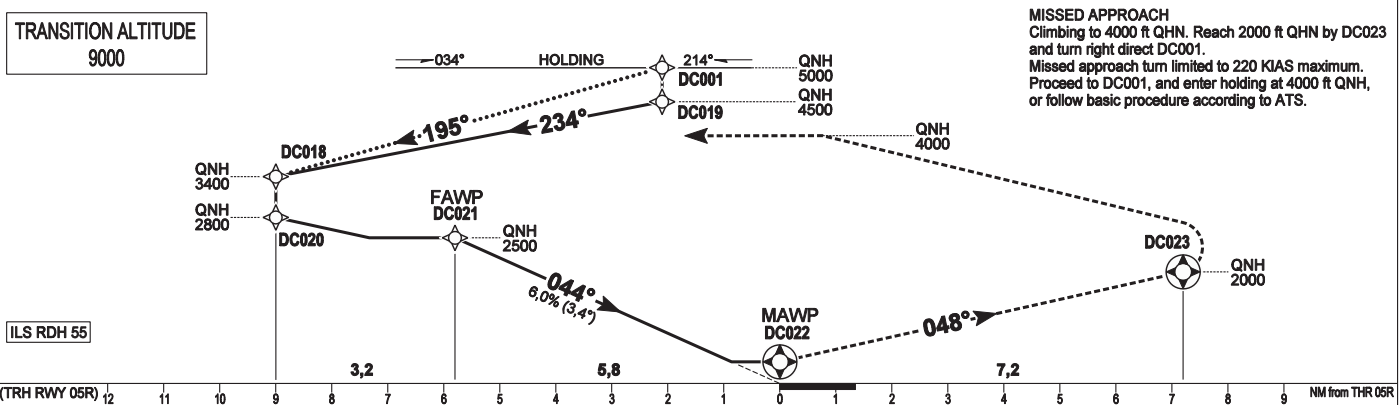
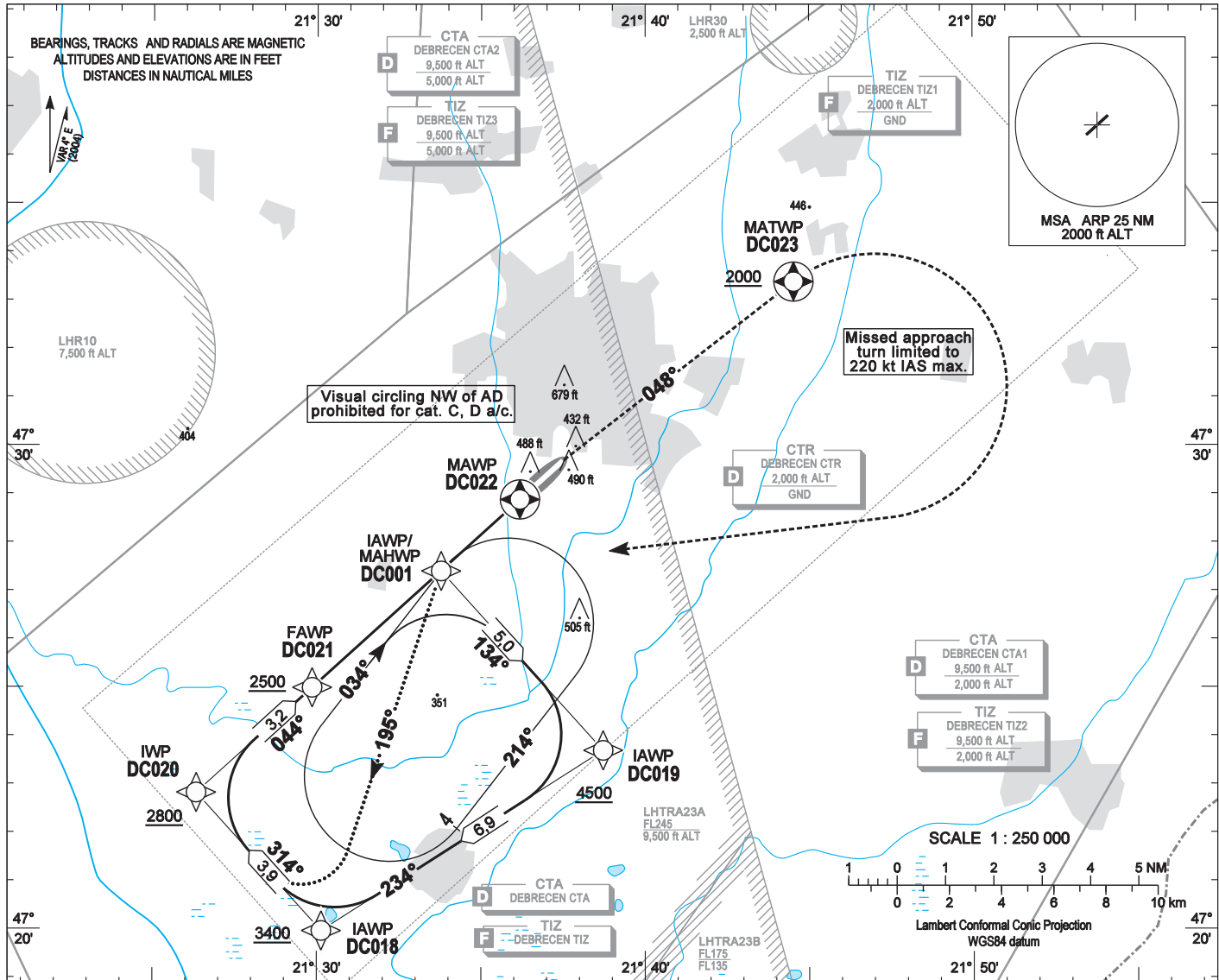


AIP HUNGARY

**INSTRUMENT APPROACH CHART - ICAO**  
AERODROME ELEV 359  
HEIGHTS RELATED TO THR RWY 05R - ELEV 355

DEBRECEN TOWER 125,900  
DEBRECEN INFO 125,900  
BUDAPEST INFO (EAST) 133,000

**DEBRECEN**  
RNAV (GNSS) RWY 05R  
(ACFT CAT A, B, C, D)



**MISSED APPROACH**  
Climbing to 4000 ft QNH. Reach 2000 ft QNH by DC023 and turn right direct DC001.  
Missed approach turn limited to 220 KIAS maximum.  
Proceed to DC001, and enter holding at 4000 ft QNH, or follow basic procedure according to ATS.

OCA (OCH)					GROUND SPEED				
STRAIGHT-IN APPROACH					kt				
CIRCLING APPROACH					MIN:sec				
ft AMSL					60 90 120 150 180				
VIS. m					5:48 3:51 2:54 2:19 1:56				

### AD 2-LHDC-RNAV<sub>(GNSS)</sub> 05R

Only aircraft, equipment and aircrew approved by the State of the Operator to carry out GNSS approaches, may use the procedure.

**Procedure entry:**

1. From DC001 (DC NDB) holding via DC019 (continous track).
2. Direct entry at 5000 ft above DC001 (DC NDB) from PERIT 5A STAR (dotted track).
3. Direct entry at 4500 ft above DC018 from VERIG 5A or NARKA 5A STAR.

**Holding procedure:**

Holding fix: DC001.

Right hand holding pattern.

**Sector 1 (parallel) entry prohibited (except Missed Approach returning direct to DC001).**

Maximum speed: 220 KIAS  
 Inbound track: 034° MAG  
 Outbound track: 214° MAG  
 Rate of turn: 3°/sec. or 25° bank angle  
 (whichever requires lesser bank)  
 Outbound distance: 4 NM  
 Minimum holding altitude: 5000 ft QNH  
 4000 ft QNH for Missed Approach

Final approach descent: 3,41°

#### WAYPOINT COORDINATES AD 2-LHDC-RNAV<sub>(GNSS)</sub> 05R

WAYPOINT	LATITUDE	LONGITUDE	WAYPOINT TYPE
DC001	N47 27 24.2	E021 33 46.9	IAWP
DC019	N47 23 41.9	E021 38 43.2	IAWP
DC018	N47 19 58.2	E021 30 08.1	IAWP
DC020	N47 22 49.5	E021 26 19.8	IWP
DC021	N47 24 59.7	E021 29 51.3	FAWP
DC022	N47 28 53.0	E021 36 10.9	MAWP
DC023	N47 33 23.1	E021 44 31.7	MATWP
DC001	N47 27 24.2	E021 33 46.9	MAHWP