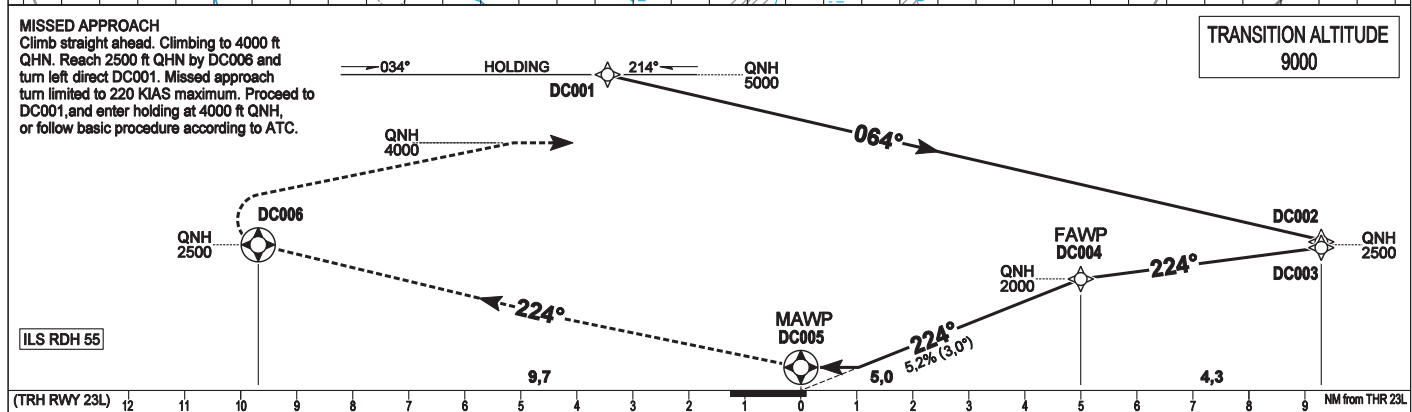
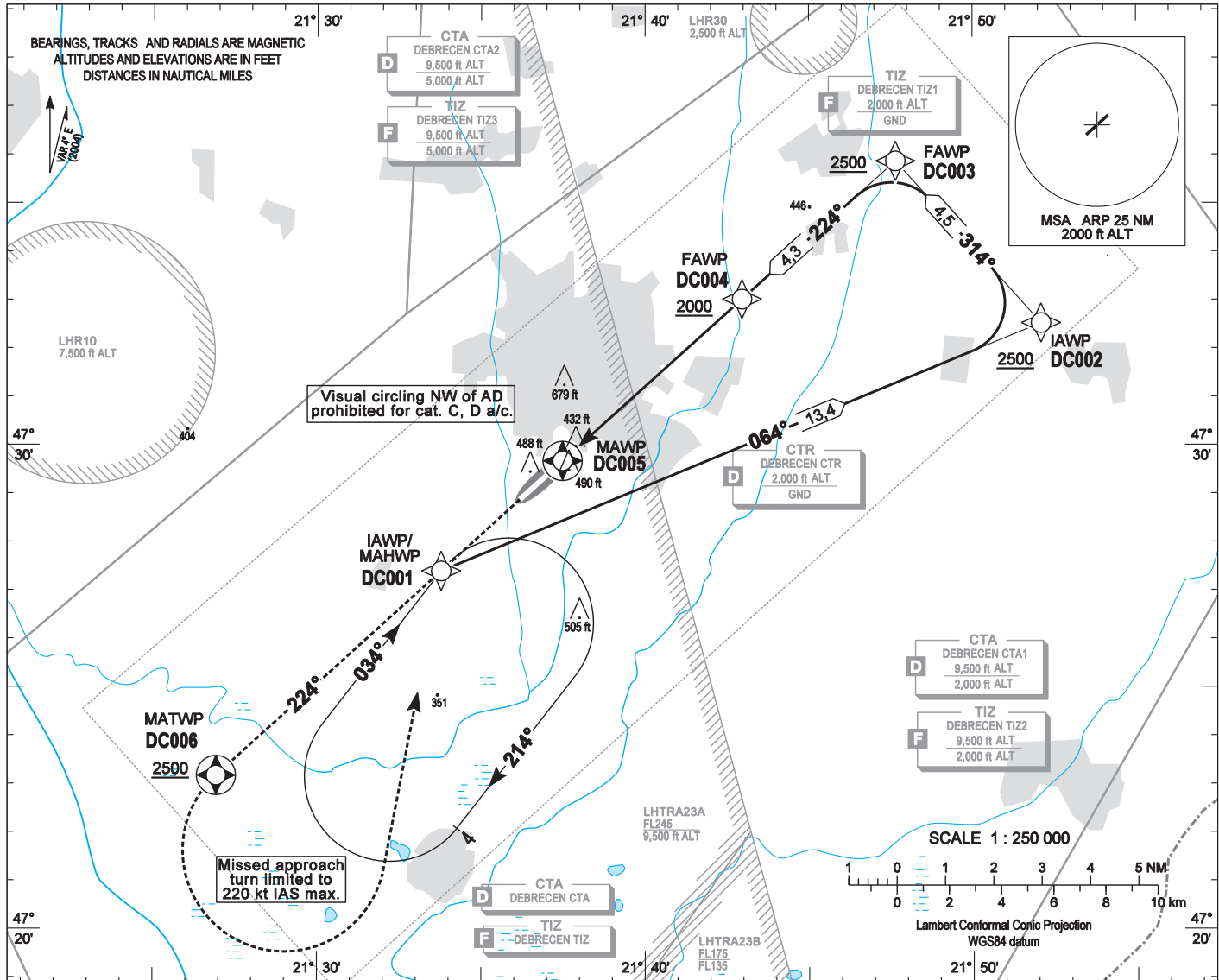


INSTRUMENT APPROACH CHART - ICAO
AERODROME ELEV 359
HEIGHTS RELATED TO THR RWY 23L - ELEV 359

DEBRECEN TOWER 125,900
DEBRECEN INFO 125,900
BUDAPEST INFO (EAST) 133,000

DEBRECEN RNAV^(GNS) RWY 23L
(ACFT CAT A, B, C, D)



(TRH RWY 23L) 12 11 10 9 8 7 6 5 4 3 2 1 0 1 2 3 4 5 6 7 8 9 NM from THR 23L					TRANSITION ALTITUDE 9000										
OCA (OCH)	A	B	C	D	GROUND SPEED					kt	60	90	120	150	180
STRAIGHT-IN APPROACH	760 (400)				FAWP - MAWP 4,50 NM					MIN:sec	4:30	3:00	2:15	1:48	1:30
CIRCLING APPROACH	ft AMSL	1060	1060	1160 SE of AD only	1160 SE of AD only										
	VIS. m	1900	2800	3700	4600										

AD 2-LHDC-RNAV_(GNSS) 23L

Only aircraft, equipment and aircrew approved by the State of the Operator to carry out GNSS approaches, may use the procedure.

Holding procedure:

Holding fix: DC001.

Right hand holding pattern.

Sector 1 (parallel) entry prohibited .

Maximum speed: 220 KIAS
Inbound track: 034° MAG
Outbound track: 214° MAG
Rate of turn: 3°/sec. or 25° bank angle
(whichever requires lesser bank)
Outbound distance: 4 NM
Minimum holding altitude: 5000 ft QNH
4000 ft QNH for Missed Approach

Final approach descent: 3,00°

WAYPOINT COORDINATES AD 2-LHDC-RNAV_(GNSS) 23L

WAYPOINT	LATITUDE	LONGITUDE	WAYPOINT TYPE
DC001	N47 27 24.2	E021 33 46.9	IAWP
DC002	N47 32 31.6	E021 52 05.1	IAWP
DC003	N47 35 52.5	E021 47 38.8	IWP
DC004	N47 33 01.3	E021 42 57.5	FAWP
DC005	N47 29 40.7	E021 37 28.9	MAWP
DC006	N47 23 10.7	E021 26 55.8	MATWP
DC001	N47 27 24.2	E021 33 46.9	MAHWP