

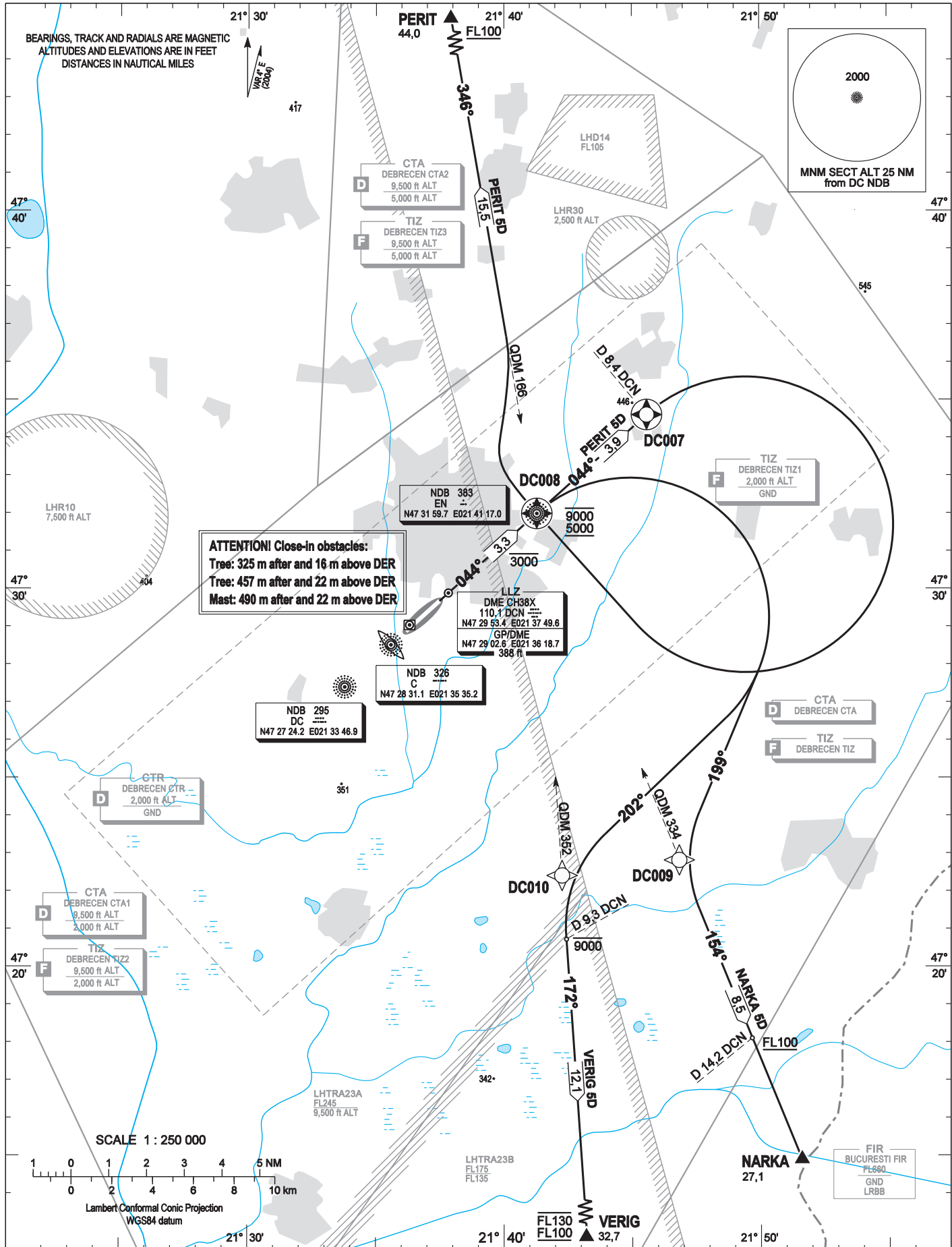
STANDARD DEPARTURES CHART -
INSTRUMENT (SID) -
ICAO

TRANSITION ALTITUDE
9000

DEBRECEN TOWER	125,900
DEBRECEN INFO	125,900
BUDAPEST INFO (EAST)	133,000

DEBRECEN
RWY 05R

MARKA 5D PERIT 5D VERIG 5D



AD 2-LHDC-SID 05R

NAME	PROCEDURE	DESCENT	R/T FAILURE
PERIT 5D (44,0 NM)	Continue RWY track and cross EN NDB at or below 3000 ft QNH. Continue to DCN DME 8,4 NM and turn right towards EN NDB. Cross EN NDB between 5000 ft QNH and 9000 ft QNH and turn right to intercept track 346 inbound PERIT (EN NDB QDM 166). Further climb only when established on track 346 inbound PERIT. Cross PERIT at FL100 or above. PDG: 3,6% due airspace.	After departure climb initially FL 110. Further climb only by ATC.	If a departing controlled aircraft having acknowledged an initial or intermediate clearance to climb to a level other than the one specified in the filed FPL for the en-route phase and no time or geographical limit was included in the clearance, should climb and maintain the level to which it was cleared for 7 minutes and then should climb to the level included in the filed FPL unless the cruising level was definitely specified in the en-route clearance. If the last acknowledged clearance includes lower level than FL110 without time or geographical limit then the aircraft should climb and maintain FL110 for 7 min. and then climb to the appropriate cruising level as above.
NARKA 5D (27,1 NM)	Continue RWY track and cross EN NDB at or below 3000 ft QNH. At EN NDB turn right to 199° to intercept track 154 inbound NARKA (EN NDB QDM 334). Cross DCN DME 14,2 NM at or above FL 100 and proceed to NARKA. PDG: 6,7% due airspace.		
VERIG 5D (32,7 NM)	Continue RWY track and cross EN NDB at or below 3000 ft QNH. At EN NDB climb 9000 ft QNH and turn right to 222° to intercept track 172 inbound VERIG (EN NDB QDM 352). Climb above 9000 ft QNH only after established on track 172 inbound VERIG <u>AND</u> after crossing DCN DME 9,3 NM outbound. Cross VERIG between FL100 and FL130. PDG: 4,9% due airspace.		

Turns: bank 15° for Cat. C, D
bank 10° for Cat. A, B
250 KIAS max.

WAYPOINT COORDINATES
AD 2-LHDC-RNAV_(GNSS, DME/DME) SID 05R underlay

WAYPOINT	LATITUDE	LONGITUDE	WAYPOINT TYPE
DC008	N47 31 59.7	E021 41 17.0	FLY-OVER
DC007	N47 34 36.6	E021 45 34.6	FLY-OVER
DC009	N47 22 49.4	E021 46 50.0	FLY-BY
DC010	N47 22 24.9	E021 42 15.8	FLY-BY