

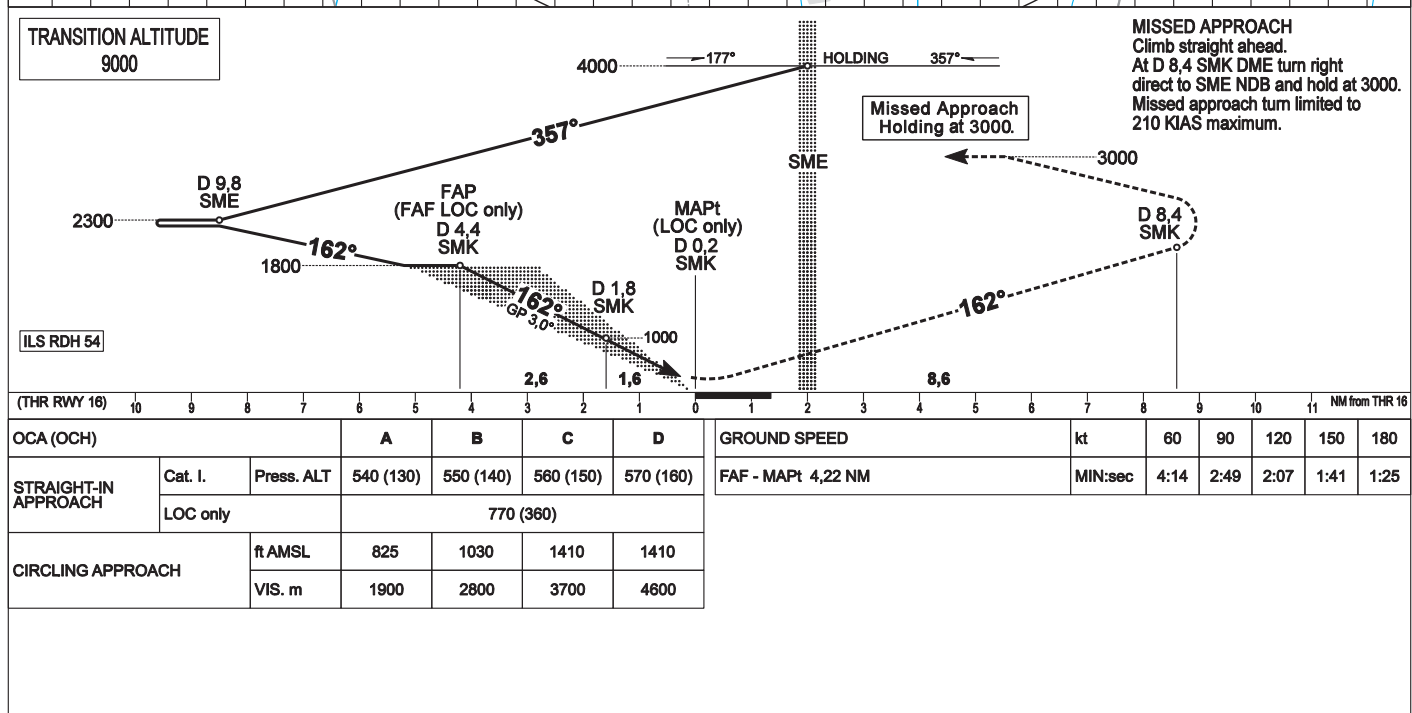
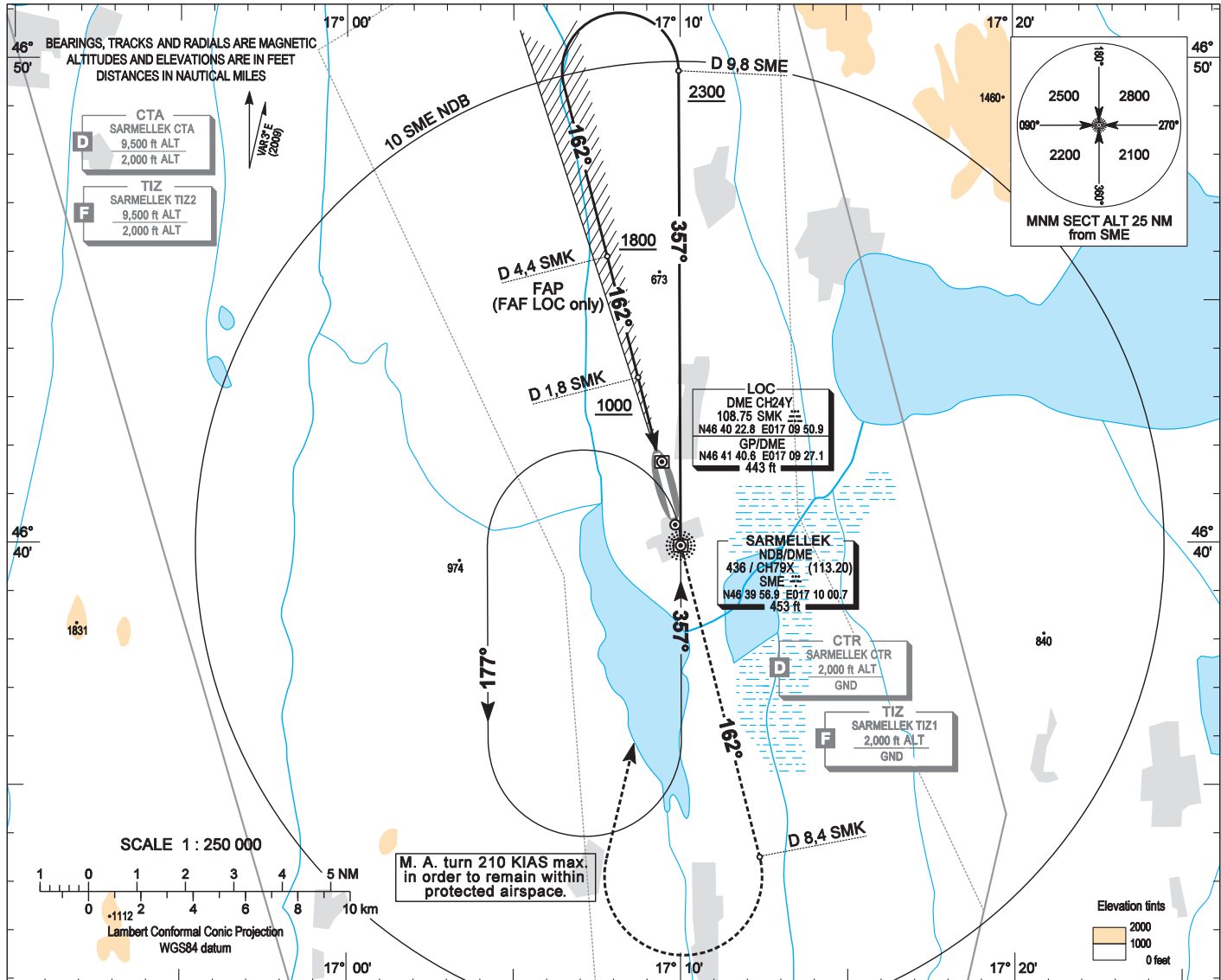
AIP HUNGARY

INSTRUMENT
APPROACH
CHART - ICAO

AERODROME ELEV 408
HEIGHTS RELATED TO
THR RWY 16 - ELEV 408

SÁRMELLÉK TOWER 134,575
BALATON INFO 134,575
BUDAPEST INFO (WEST) 125,500

SÁRMELLÉK
ILS or LOC RWY 16
(ACFT CAT A, B, C, D)



AD 2-LHSM-ILS 16

Approach from SME DME:

Initial altitude: 4000.

Fly outbound on 357° for 3 minutes or D 9,8 SME DME (whichever comes first) and descend to 2300.

Turn left (185 KIAS max.) intercept the localizer inbound on 162°, then descend to 1800.

Glide path interception at D 4,4 SMK DME, then follow ILS.

Holding procedure:

Holding fix: SME DME.

Left hand holding pattern.

Inbound track: 357°
Outbound track: 177°
Rate of turn: 3°/sec. or 25° bank angle
(whichever requires lesser bank)
Outbound timing: 1 min
Minimum holding altitude: 4000
3000 for Missed Approach