

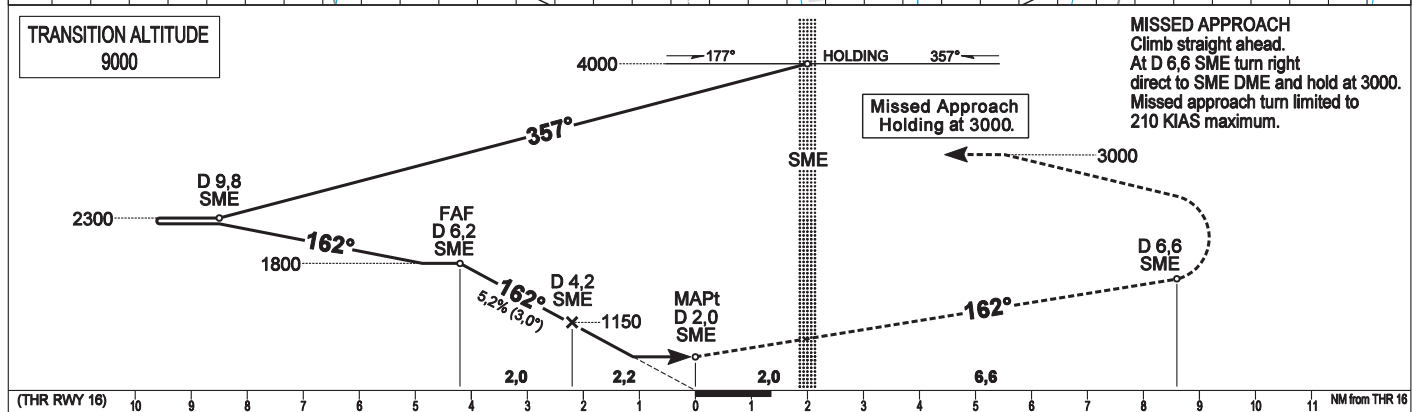
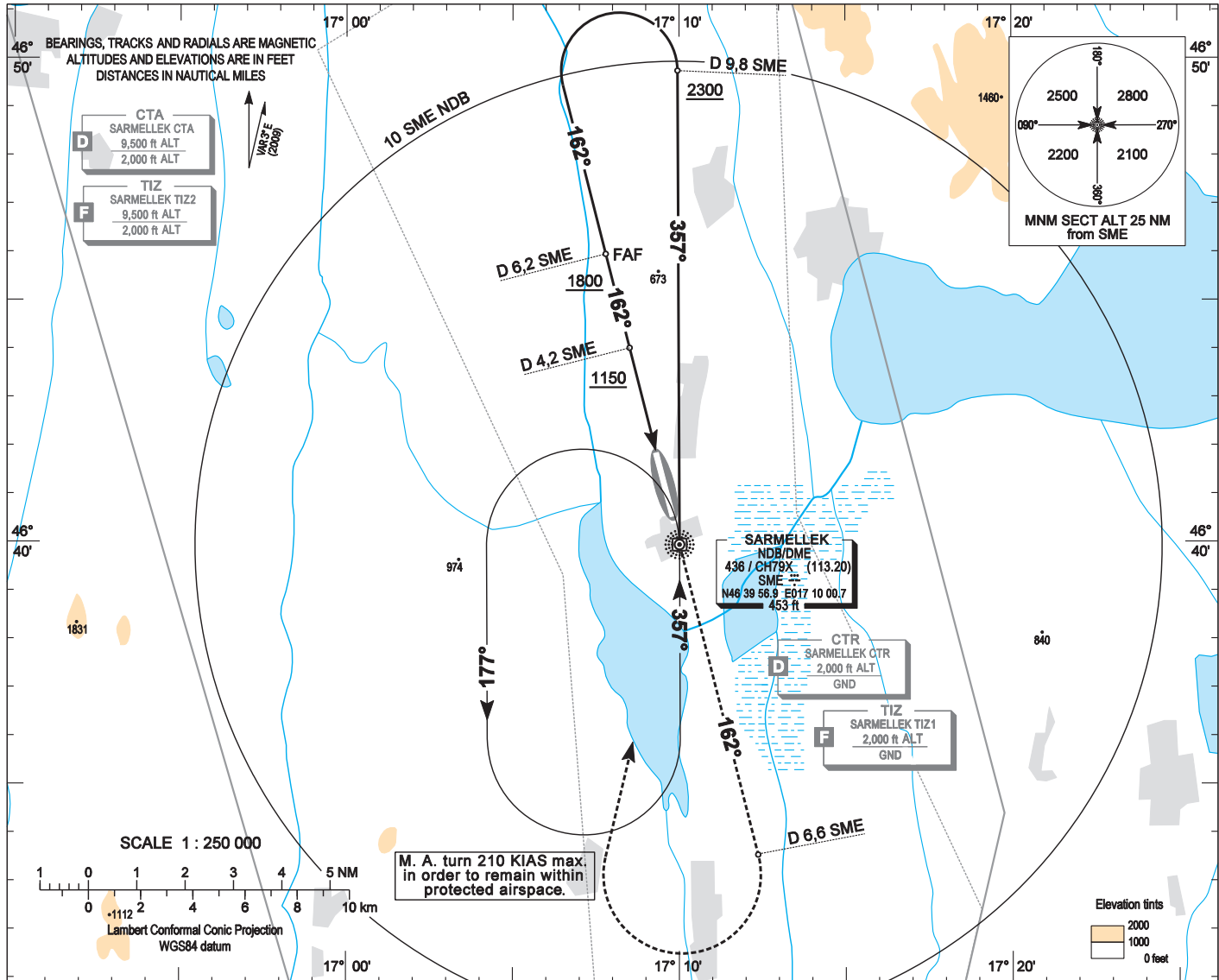
AIP HUNGARY

INSTRUMENT
APPROACH
CHART - ICAO

AERODROME ELEV 408
HEIGHTS RELATED TO
THR RWY 16 - ELEV 408

SÁRMELLÉK TOWER 134,575
BALATON INFO 134,575
BUDAPEST INFO (WEST) 125,500

SÁRMELLÉK
NDB RWY 16
(ACFT CAT A, B, C, D)



OCA (OCH)	A	B	C	D	GROUND SPEED	kt	60	90	120	150	180
	770 (360)					FAF - MAPt 4,18 NM	MIN:sec	4:11	2:47	2:06	1:40
STRAIGHT-IN APPROACH	ft AMSL	825	1030	1410							
	VIS. m	1900	2800	3700							
CIRCLING APPROACH	ft AMSL	825	1030	1410							
	VIS. m	1900	2800	3700							

AD 2-LHSM-NDB 16

Approach from SME DME:

Initial altitude: 4000.

Fly outbound on 357° for 3 minutes or D 9,8 SME DME (whichever comes first) and descend to 2300.

Turn left (185 KIAS max.) to 162° inbound, then descend to 1800.

At D 6,2 SME DME descend to 1150.

At D 4,2 SME DME descend to 770.

Holding procedure:

Holding fix: SME DME.

Left hand holding pattern.

Inbound track: 357°

Outbound track: 177°

Rate of turn: 3°/sec. or 25° bank angle

(whichever requires lesser bank)

Outbound timing: 1 min

Minimum holding altitude: 4000

3000 for Missed Approach

Final approach descent: 3,00°