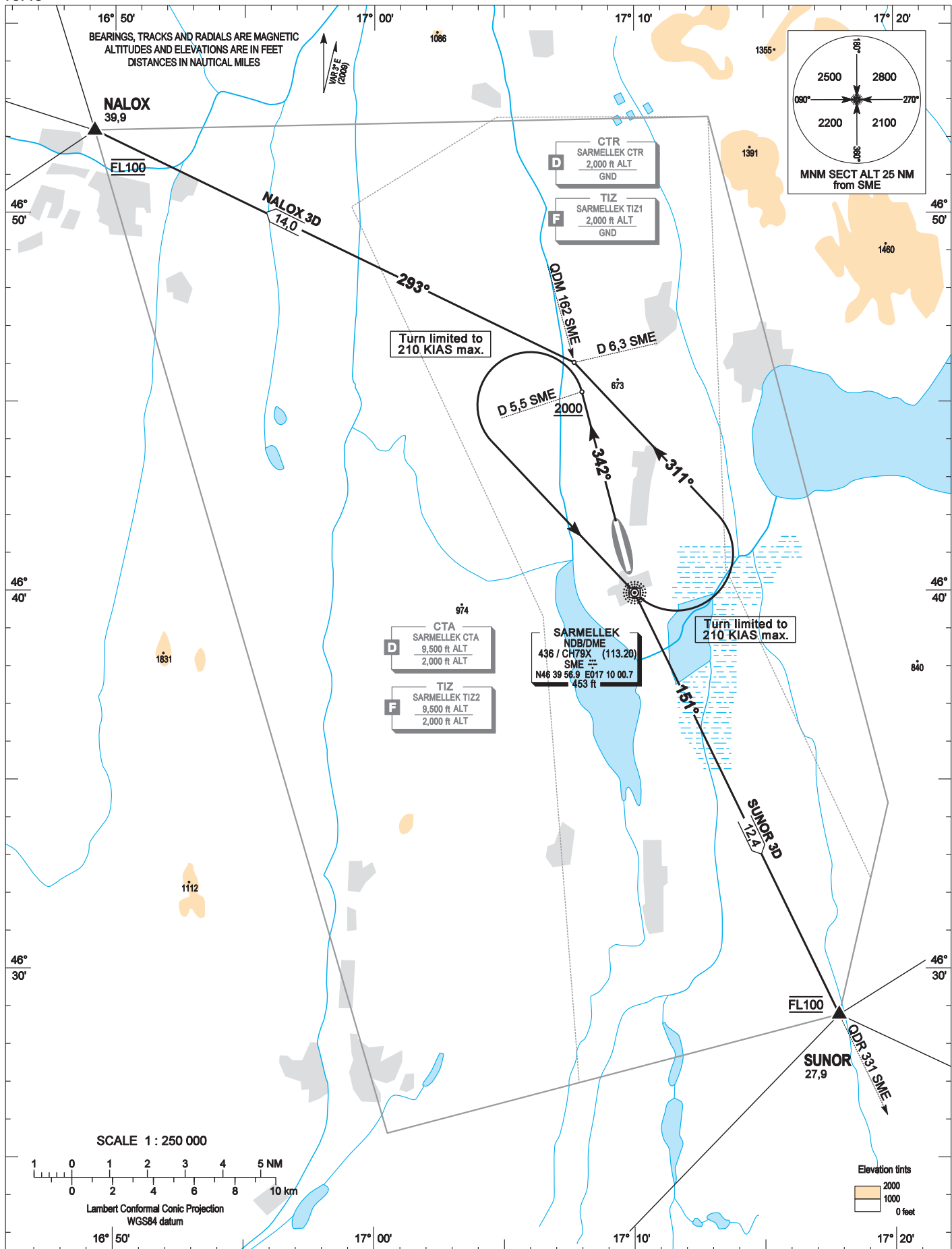


STANDARD DEPARTURES CHART -
INSTRUMENT (SID) -
ICAO

TRANSITION ALTITUDE
9000

SÁRMELLÉK TOWER 134,575
BALATON INFO 134,575
BUDAPEST INFO (WEST) 125,500

SÁRMELLÉK/BALATON
RWY 34
NALOX 3D SUNOR 3D



AD 2-LHSM - SID 34

NAME	PROCEDURE
NALOX 3D (39,9 NM)	After departure continue RWY HDG. Climb to FL100. Cross D 5,5 SME DME at 2000 or above then turn left and proceed direct to SME NDB. (Turn limited to 210 KIAS max.) After crossing SME NDB turn left to track 311°. After crossing QDM 162 SME NDB turn left to track 293° proceeding to NALOX. Cross NALOX at FL 100.
SUNOR 3D (27,9 NM)	After departure continue RWY HDG. Climb to FL100. Cross D 5,5 SME DME at 2000 or above then turn left and proceed direct to SME NDB. (Turn limited to 210 KIAS max.) After crossing SME NDB fly on QDR 151 SME NDB proceeding to SUNOR. Cross SUNOR at FL 100.